

FCC Compliance Statement
FCC ID: ZZNPM100
This device complies with Part 15 of the FCC Rules. Operation is subject to the following two conditions: (1) this device may not cause harmful interference, and (2) this device must accept any interference received, including interference that may cause undesired operation.
The grantee is not responsible for any changes or modifications not expressly approved by the party responsible for compliance. Such modifications could void the user's authority to operate the equipment.
This equipment has been tested and found to comply with the limits for a Class B digital device, pursuant to part 15 of the FCC Rules. These limits are designed to provide reasonable protection against harmful interference in a residential installation. This equipment generates, uses and can radiate radio frequency energy and, if not installed and used in accordance with the instructions, may cause harmful interference to radio communications. However, there is no guarantee that interference will not occur in a particular installation. If this equipment does cause harmful interference to radio or television reception, which can be determined by turning the equipment off and on, the user is encouraged to try to correct the interference by one or more of the following measures:
Reorient or relocate the receiving antenna.
Increase the separation between the equipment and the receiver.
Connect the equipment into an outlet on a circuit different from that to which the receiver is connected.
Consult the dealer or an experienced radio/TV technician for help.

Industry Canada (IC) Compliance Statement
IC: 9896A-PM100
This device complies with Industry Canada license-exempt RSS standard(s). Operation is subject to the following two conditions: (1) this device may not cause interference, and (2) this device must accept any interference, including interference that may cause undesired operation of the device. CAN ICES-3(B)/NMB-3(B)
The device meets the exemption from the routine evaluation limits in section 2.5 of RSS 102 and compliance with RSS-102 RF exposure, users can obtain Canadian information on RF exposure and compliance.
This transmitter must not be co-located or operating in conjunction with any other antenna or transmitter. This equipment should be installed and operated with a minimum distance of 20 centimeters between the radiator and your body.

Le présent appareil est conforme aux CNR d'Industrie Canada applicables aux appareils radio exempts de licence. L'exploitation est autorisée aux deux conditions suivantes: (1) l'appareil ne doit pas produire de brouillage, et (2) l'utilisateur de l'appareil doit accepter tout brouillage radioélectrique reçu, même si ce brouillage est susceptible d'en compromettre le fonctionnement du dispositif. CAN ICES-3(B)/NMB-3(B)
Le dispositif rencontre l'exemption des limites courantes d'évaluation dans la section 2.5 de RSS 102 et la conformité à l'exposition et la conformité de rf. Cet émetteur ne doit pas être co-placé ni fonctionnant en même temps qu'aucune autre antenne ou émetteur. Cet équipement devrait être installé et actionné avec une distance minimum de 20 centimètres entre le radiateur et votre corps.



20301_D1

Contact us at
info@4iiii.es

Made in Canada by:
4iiii

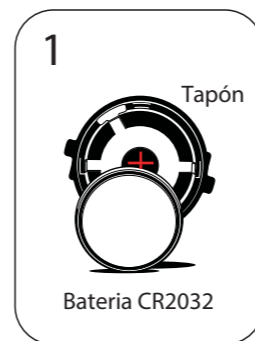
PRECISION POWER METER

Guia de início rápido

Para consultar o manual de utilização detalhado, visite 4iiii.com/precision

Início!

Primeira utilização:
Siga todos os passos.



Utilizações seguintes:
Iniciar, colocar a zeros e está pronto a utilizar.

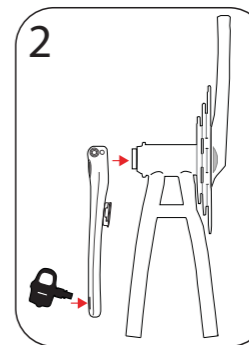
Coloque uma pilha nova inserindo o lado positivo da mesma na tampa.

Certifique-se que o vedante de borracha está em boas condições e lubrificado.

Este procedimento é fundamental para garantir uma perfeita estanqueidade contra a entrada de água e pó.

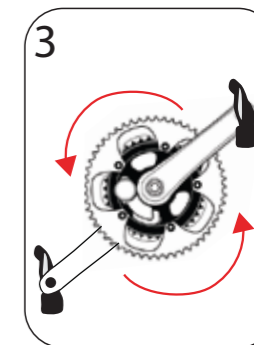
Reinstale o crank

e os pedais na bicicleta de acordo com as especificações do fabricante.



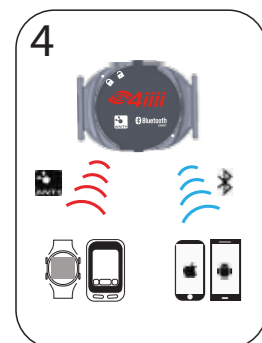
Despertar -wake up

Inicie o seu PRECISION fazendo rodar o crank algumas vezes.



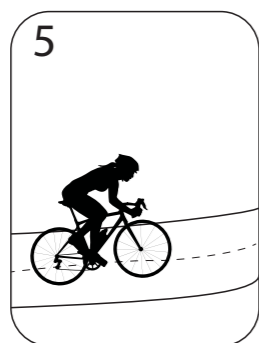
Vincular PRECISION

emparelhe o dispositivo com uma unidade compatível.



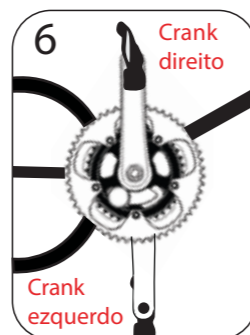
Andar

na primeira utilização ajuste o crank pedalando durante 1 a 3 minutos.

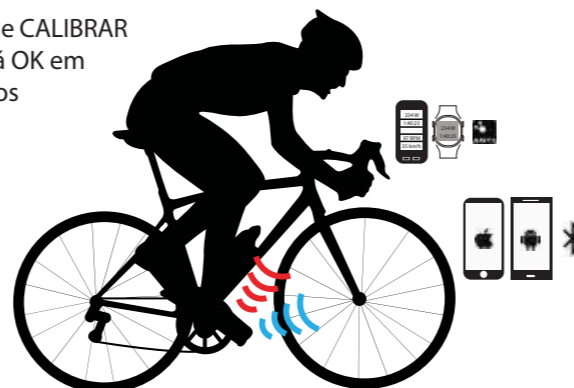


Calibrar a "zero"

Retire os pés dos pedais e coloque os cranks como na figura à direita. Selecione a opção "colocar a zeros" ou "calibrar" no ecrã.



Pressione CALIBRAR e deverá OK em segundos



Pedalada com PRECISION

Os dados aparecerão automaticamente por ANT + ou Bluetooth



Veja a análise do seu desempenho através do seu programa ou aplicativo favorito

Banda de frequência cardíaca

Viiiiva é a banda de frequência cardíaca Transmissão ANT + Bluetooth ou



Pedalando em sua área

Sportiiii sincronizados com seu dispositivo eletrônico lii notifica sobre as áreas com sinais de luz



Para melhores resultados, evitar variações de temperatura entre as etapas 5 e 6